

Global expertise in
handling of Lubricants
and other fluids

mato



MATO GmbH & Co. KG
Benzstr. 16-24
63165 Mühlheim a.M.
Germany
T: +49 (0) 6108 - 906-0
F: +49 (0) 6108 - 906-120
www.mato.de
lubrication@mato.de



MATO France S.A.R.L.
2 rue du grunhof / ZA
F-57890 Porcellette
France
T: +33 (0) 3 - 87821215
F: +33 (0) 3 - 87297213
mato.france@mato.de



MATO Industries Ltd.
Lumatic Lubrication Division
26 Brunel Road
St Leonards on Sea, East Sussex
TN38 9RT United Kingdom
T: +44 (0) 1424 - 851270
F: +44 (0) 1424 - 850091
sales@lumatic.co.uk



MATO Iberica, S.L.
Pol. Industrial Mora Garay
Calle Marie Curie, parc. 36/38
E-33211 Gijón
Spain
T: +34 (0) 985 - 328900 / 328211
F: +34 (0) 985 - 322647
matoiberica@matoiberica.es



MATO Suisse AG
Industriestrasse 53
CH-6034 Inwil
Switzerland
T: +41 (0) 41 - 4490990
info@mato.ch
www.mato.ch



MATO Corporation
201 Resource Drive
Beckley, WV 25801
West Virginia
USA
T: +1 304 - 255 1280
F: +1 304 - 255 2501
info@mato-usa.com



MATO Australia Pty Ltd.
PO Box 3102
39 Bonville Avenue
Thornton NSW 2322
Australia
T: +61 1300 - 850 795
F: +61 2 4936 - 1388
maus@mato.com.au



MATO Industrial Technologies
(Qufu) Co Ltd.
West End of Changchun Road
Development Zone of Qufu
273100 Qufu City, Shandong
PR China
T: +86 537 - 4533799
F: +86 537 - 4533299
www.mato.com.cn



MATO Sib
Uliza Telefonnaja 15
Kemerovo
652523 Leninsk-Kusnezkiy
Russian Federation
T: +7 (0) 38456 35166
F: +7 (0) 38456 35166
mato-sib@yandex.ru



MATO Products Pty Ltd.
P.O. Box 224
Kempton Park 1620
28 Forge Road Spartan
South Africa
T: +27 (0) 11 - 928 4163
F: +27 (0) 11 - 923 6071
matosales@multotec.co.za



Lube-Shuttle® is a registered trademark of MATO.
All photos used are protected by copyright. Any use of the photos without permission,
in what form ever, is prohibited and will be prosecuted under civil and criminal laws.

Lubrication Equipment - Fluid Handling Products



mato

Accu-Greaser



Powered by BOSCH

Accu-Greaser 18 V Li-Ion

AMPShare - Powered by BOSCH

- for 400 g pull-off cartridges DIN 1284 (type S)
- for 400 g Lube-Shuttle® cartridges (type LS)
- for 500 g screw-cap cartridges (type SP)
- for 400 g pull-off **and** Lube-Shuttle® cartridges (type S-LS)
- for 400 g pull-off, Lube-Shuttle® **and** 500 g screw-cap cartridges (type S-LSP)

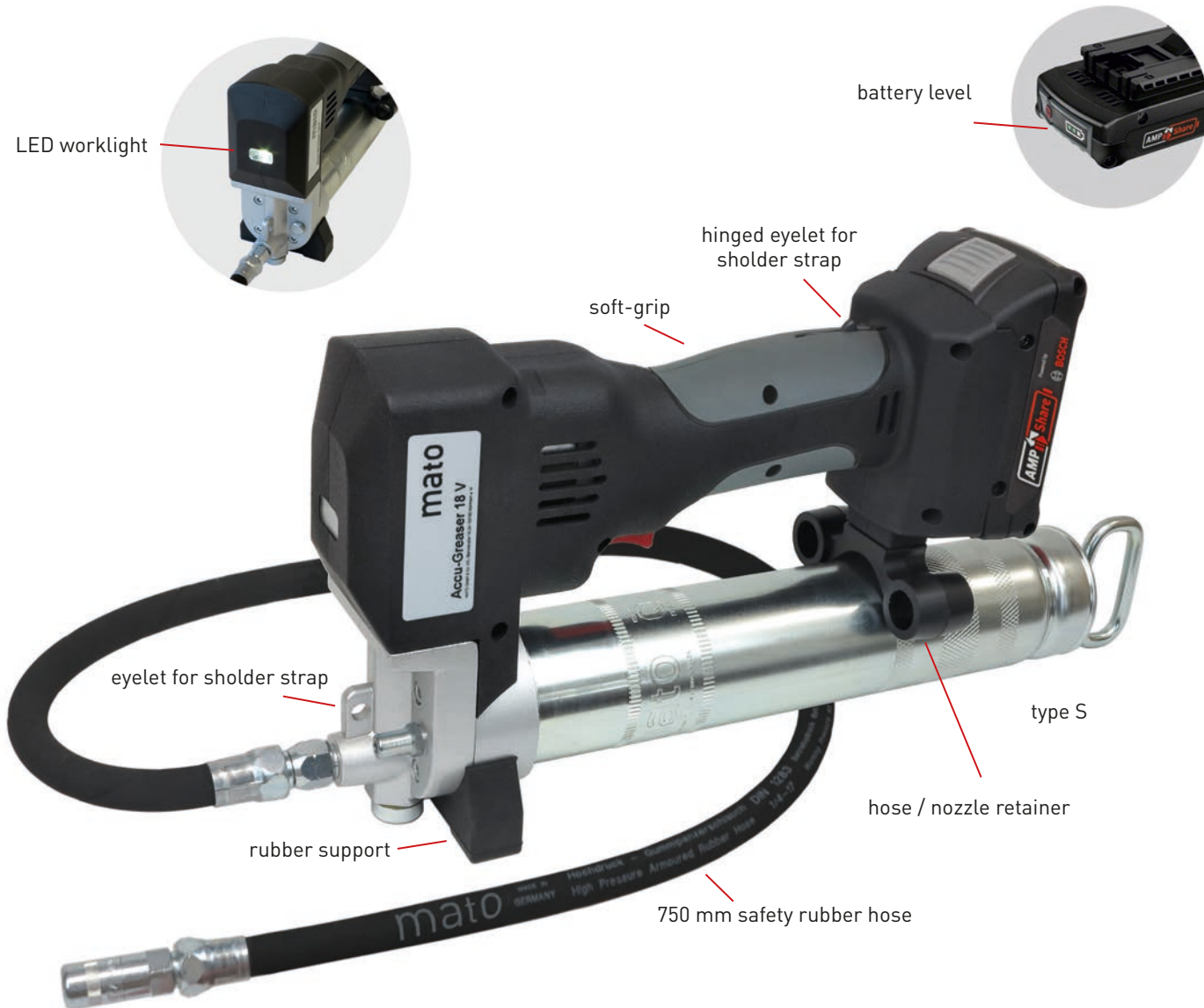
Product Lines

- **Basic**
without battery and charger
- **Premium**
with battery 2.0 Ah and charger
- **Professional**
with battery 4.0 Ah, charger and shoulder strap

Further features:

- max. delivery rate approx. **120 ccm per minute**
- LED worklight
- battery level display integrated in battery pack
- cartridge protection tubes for all types of cartridges
- high pressure safety rubber hose, 1.650 b.p., length 750 mm, incl. 4-jaw hydraulic coupler, thread **R 1/8"**
- hose / nozzle retainer
- soft grip insert
- rubber support for safe stand
- sturdy but compact transport case with cavities to fit cartridges

All versions feature a powerful drive unit with 18 V DC motor and planetary gear that reaches peak pressure rates well above 700 bar max. w.p. The greaser drive unit is equipped with an electric overload protection.



Accu-Greaser 18 V Basic-Line

The Basic-Line is equipped without battery and charger



type S

Accu-Greaser 18 V Premium-Line

The Premium-Line is equipped with:
 - Li-Ion AMPShare battery GBA 18 V - 2.0 Ah
 - charger, input 220-2240 V AC / 50-60 Hz with overload protection, charging time approx. 80% in 24 min. and 100% in 35 min.'



type LS

Accu-Greaser 18 V Professional-Line

The Professional-Line is equipped with:
 - Li-Ion AMPShare battery GBA 18 V - 4.0 Ah
 - charger, input 220-240 V AC / 50-60 Hz with overload protection, charging time approx. 80% in 48 min. and 100% in 65 min.
 - shoulder strap



type SP

Accu-Greaser accessories

Li-Ion AMPShare battery GBA 18 V - 2.0 Ah
with battery level indicator

Li-Ion AMPShare battery GBA 18 V - 4.0 Ah
with battery level indicator

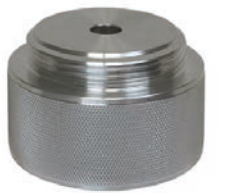
AMPShare-charger GAL 18V-40 with overload protection. Input 220-240 V / 50-60 Hz. 3 LED monitoring bulbs to indicate charging status, 2 m cable for mains connection with 2-pin EU flat-plug (versions with connection UK / US / AUS upon request)

Shoulder strap with safe fastening to the battery grease gun, for comfortable and fatigue-free working

Cartridge Adaptor for use of 500 g screw-cap cartridges



shoulder strap



cartridge adaptor



AMPShare GBA 18 V - 2.0 Ah



AMPShare GBA 18 V - 4.0 Ah



AMPShare-charger GAL 18V-40